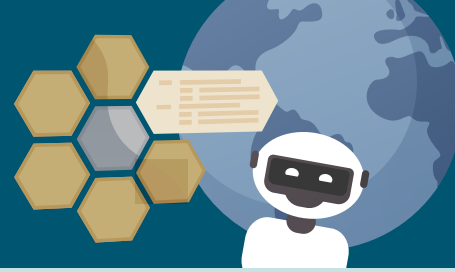
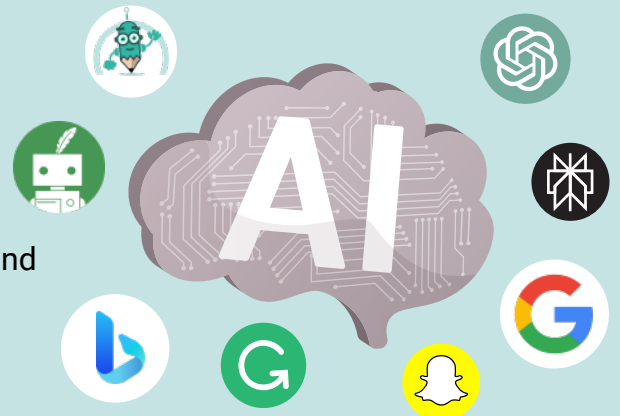


Artificial Intelligence



What is Artificial Intelligence?

Artificial Intelligence (AI) is the use of a computer or program to perform tasks that usually require human intelligence. These programs include ChatGPT, Quillbot, Paraphraser, Google Bard, Microsoft Bing, Snap Chat AI and Perplexity AI. Programs that significantly change your writing during the drafting process (such as Grammarly's paraphrasing tool) are also considered AI.



Can I use AI for assessment tasks at Calvin?

There may be times when your teacher will allow the use of AI for researching, explaining an idea or brainstorming. However, unless **specifically told** that using AI on assessment work is allowed, you should assume that any task completed for assessment contains your own words, images and ideas.



You cannot submit a work generated by AI and claim that it was produced or written by you.



If your teacher has allowed the use of AI in your class or for your assessment piece:

1

You must carefully check the words or images provided by the AI tool as there are often errors or biases in the information generated through AI.



2

You must reference the AI tool that was used and how it was used.



continued...

How do I cite a source?

Provide the name of the developer of the AI tool (e.g. Open AI), the name of the tool (e.g. Chat GPT), the prompt that was entered to gain the information (e.g. "what is the role of the witches in Macbeth") and the date the text was generated.

An example of referencing AI in a reference list:

Open AI (2023) "what is the role of the witches in Macbeth" ChatGPT (May 8, 2023)

An example of referencing an in-text reference or a footnote:

(Open AI, "Role of Witches in Macbeth", 2023) ...

or working it into the text:

I started with a reference essay "Year 9 essay on the role of the witches in Macbeth"
(Open AI, 2023) and have chosen to focus on the theme of good versus evil in Macbeth.

Some teachers may want to view the entire sequence of prompts and interactions you have used. This would include a copy of the 'conversation' including all prompts and AI generated responses.



How do I demonstrate that work I have submitted is my own?

If the teacher requires evidence that the work is your own, you may be asked to do some or all of the following:

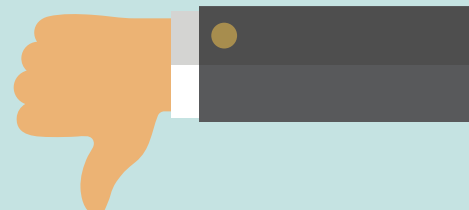
- Upload the piece onto Turnitin or another program that identifies use of AI or plagiarism
- Explain the work submitted so that the teacher can see your understanding of the topic
- Write another assessment without the use of technology, showing a similar style and complexity in language and ideas
- Show your drafting process via google docs or your workbook



What if I am found to be using AI inappropriately at Calvin?

Students who are found to have used AI to submit work as their own or without proper referencing will have breached the Calvin Academic Integrity Policy. The consequences are outlined in the Policy document. Depending on the year level of the student and the context of the breach, consequences may include:

- re-submission of the task with maximum of C grade
- completion of a new task with maximum of C grade
- provision of an "E" or "Z" rating for that task
- meeting with Head of Learning Area and/or parents
- removal from the course



If you are unsure about appropriate use of AI, ask your teacher for support!